

ASSESSOR'S PLAT NO.1 OF LAKESIDE HEIGHTS

A PLAT IN THE NW1/4 AND NE1/4 OF FRACTIONAL SECTION 4, T.23N., R.5E.,
PLAINFIELD TOWNSHIP, IOSCO COUNTY, MICHIGAN

SURVEYOR'S CERTIFICATE ON ASSESSOR'S PLAT

I, KEYNO J. SHELLENBARGER, SURVEYOR, CERTIFY:

THAT I HAVE SURVEYED, DIVIDED AND MAPPED THE LAND SHOWN ON THIS PLAT,
DESCRIBED AS FOLLOWS:

ASSESSORS' PLAT NO. 1 OF LAKESIDE HEIGHTS, A PLAT IN THE NORTHWEST 1/4 AND
NORTHEAST 1/4 OF SECTION 4, T.23N., R.5E., PLAINFIELD TOWNSHIP, IOSCO COUNTY,
MICHIGAN DESCRIBED AS BEGINNING S.01° 14'37"W., 2200.75 FEET FROM THE NORTH 1/4
CORNER OF SAID SECTION 4; THENCE ALONG AN INTERMEDIATE TRAVERSE LINE THAT
MEANDERS THE SHORE OF LONG LAKE N.70° 43'36"E., 396.47 FEET, N.50° 35'33"E.,
48.36 FEET, AND N.12° 58'02"E., 52.28 FEET; THENCE S.60° 26'46"E., ALONG THE
SOUTHWESTERLY LINE OF LAKE STREET (40 FEET WIDE), 162.65 FEET; THENCE
S.41° 32'34"W., 74.85 FEET; THENCE ALONG A CURVE TO THE RIGHT, 255.71 FEET
(CENTRAL ANGLE 29° 24'42", RADIUS 498.15 FEET, LONG CHORD: BEARING
S.56° 14'55"W., 252.92 FEET); THENCE S.70° 57'16"W., 274.27 FEET; THENCE
S.67° 55'33"W., 82.62 FEET; THENCE S.67° 58'23"W., 28.61 FEET; THENCE
S.12° 20'48"E., 618.42 FEET; THENCE S.89° 52'00"W., 138.35 FEET; THENCE
SOUTHWESTERLY ALONG A CURVE TO THE LEFT, 40.94 FEET (CENTRAL ANGLE 42° 38'51",
RADIUS 55.00 FEET, LONG CHORD: BEARING S.68° 32'31"W., 40.00 FEET); THENCE
N.66° 11'09"W., 55.36 FEET; THENCE NORTHEASTERLY, ALONG A CURVE TO THE LEFT,
45.43 FEET (CENTRAL ANGLE 40° 20'18" RADIUS 600.00 FEET; LONG CHORD: BEARING
N.21° 59'58"E., 45.42 FEET); THENCE SOUTH 89° 52'00"W., 78.00 FEET TO AN
INTERMEDIATE TRAVERSE LINE; THENCE ALONG SAID INTERMEDIATE TRAVERSE LINE
N.10° 52'00"E., 150.00 FEET, N.15° 48'56"W., 240.10 FEET, N.70° 07'08"W., 57.84
FEET, N.75° 38'21"W., 49.61 FEET, S.78° 38'36"W., 52.72 FEET, S.82° 02'12"W.,
52.40 FEET, S.59° 48'39"W., 63.24 FEET, S.58° 16'28"W., 49.39 FEET,
S.68° 07'22"W., 52.69 FEET, S.80° 57'07"W., 51.27 FEET, N.74° 21'27"W., 66.28
FEET, N.15° 13'35"E., 154.76 FEET, N.44° 03'49"E., 199.64 FEET, N.87° 15'55"E.,
249.44 FEET, N.67° 07'54"E., 59.85 FEET, N.67° 11'09"E., 248.36 FEET, AND
N.70° 43'36"E., 3.08 FEET TO THE POINT OF BEGINNING, CONTAINING 38 LOTS
NUMBERED 1 THROUGH 38, AND INCLUDING ALL LAND BETWEEN SAID INTERMEDIATE
TRAVERSE LINE AND WATER'S EDGE LINE OF LONG LAKE.

THAT I HAVE MADE SUCH SURVEY, LAND DIVISION AND PLAT BY THE DIRECTION OF THE
PLAINFIELD TOWNSHIP BOARD OF TRUSTEES, ON FEBRUARY 9, 1994.

THAT SUCH PLAT IS A CORRECT REPRESENTATION OF ALL THE EXTERIOR BOUNDARIES OF
THE LAND SURVEYED AND THE SUBDIVISION OF IT.

THAT THE REQUIRED MONUMENTS AND LOT MARKERS HAVE BEEN LOCATED IN THE GROUND.

THAT THE ACCURACY OF SURVEY IS WITHIN THE LIMITS REQUIRED BY SECTION 126 OF
THE ACT.

THAT THE BEARINGS SHOWN ON THE PLAT ARE EXPRESSED AS REQUIRED BY SECTION 126
(3) OF THE ACT AND AS EXPLAINED IN THE LEGEND.

MAY 3, 1997
(DATE)

SHELLENBARGER ENGINEERING AND SURVEYING, P.C.
5910 N. HAGADORN ROAD
EAST LANSING, MICHIGAN 48823

Keyno J. Shellenbarger
KEYNO J. SHELLENBARGER, PRESIDENT
PS 30101



ASSESSOR'S CERTIFICATE

I, AS SUPERVISOR AND ASSESSOR, BY VIRTUE OF THE AUTHORITY VESTED IN
SECTION 201 (2), ACT 288 OF P. A. OF 1967, HAVING BEEN DULY AUTHORIZED
BY THE TOWNSHIP OF PLAINFIELD, IOSCO COUNTY, STATE OF MICHIGAN, HAVE
CAUSED THE LAND DESCRIBED IN THE ANNEXED PLAT TO BE SURVEYED, LAID OUT
AND PLATTED AND CERTIFY THAT PUBLIC TITLE TO THE STREETS SHOWN ON THE
PLAT HAS BEEN ACQUIRED BY USE EXCEPT FOR PRIVATE FAIRLANE DRIVE AND
THAT THE PLAT CONFORMS TO SECTIONS 201 THROUGH 213 OF ACT 288 OF P. A.
OF 1967, AS AMENDED.

WITNESSES:

Diane Rasch
DIANE RASCH
Michelle Laszlo
MICHELLE LASZLO

Joseph Kimmerer
JOSEPH KIMMERER, SUPERVISOR/ASSESSOR
220 N. WASHINGTON
HALE, MICHIGAN 48739

ACKNOWLEDGMENT

STATE OF MICHIGAN,
SS.
COUNTY OF IOSCO

ON THIS 4 DAY OF December A. D. 1997, BEFORE ME PERSONALLY
CAME THE ABOVE NAMED JOSEPH KIMMERER, SUPERVISOR/ASSESSOR OF
PLAINFIELD TOWNSHIP, KNOWN TO ME TO BE THE PERSON WHO EXECUTED THE
ABOVE DEDICATION, AND ACKNOWLEDGED THE SAME TO BE HIS FREE ACT AND
DEED AS SUCH ASSESSOR.

Kathy Freitag
KATHY FREITAG
NOTARY PUBLIC IN AND FOR IOSCO COUNTY.

MY COMMISSION EXPIRES 8-25-2002

CERTIFIED TRUE COPY OF
RECORDED PLAT
BY DEPARTMENT OF CONSUMER
AND INDUSTRY SERVICES

BY Maynard R. Dyer
MAYNARD R. DYER, P.S.
MANAGER
SUBDIVISION CONTROL UNIT

DATE 3-10-98

CERTIFICATE OF COUNTY ROAD COMMISSION

THE BOARD OF COUNTY ROAD COMMISSIONERS OF THE COUNTY OF IOSCO HEREBY
CERTIFIES THAT THE PUBLIC ROADS SHOWN ON THE PLAT WERE IN EXISTENCE AT
THE TIME THE PLAT WAS MADE. THIS CERTIFICATION IS MADE THIS 16TH DAY
OF JUNE, 1997, IN ACCORDANCE WITH SECTION 209 (1) OF ACT 288
OF 1967.

Frank M. Leiva
FRANK M. LEIVA CHAIRMAN

Richard M. Harris
RICHARD M. HARRIS VICE CHAIRMAN

Stanley Kowalski
STANLEY KOWALSKI MEMBER

CERTIFICATE OF MUNICIPAL APPROVAL OF ASSESSOR'S PLAT

THIS PLAT WAS APPROVED ON SEPTEMBER 3, 1997, BY THE BOARD OF
TRUSTEES OF PLAINFIELD TOWNSHIP, AS HAVING BEEN MADE AND COMPLYING
WITH THE REQUIREMENTS OF SECTION 201 AND 209 (4) OF P. A. 288 OF 1967.

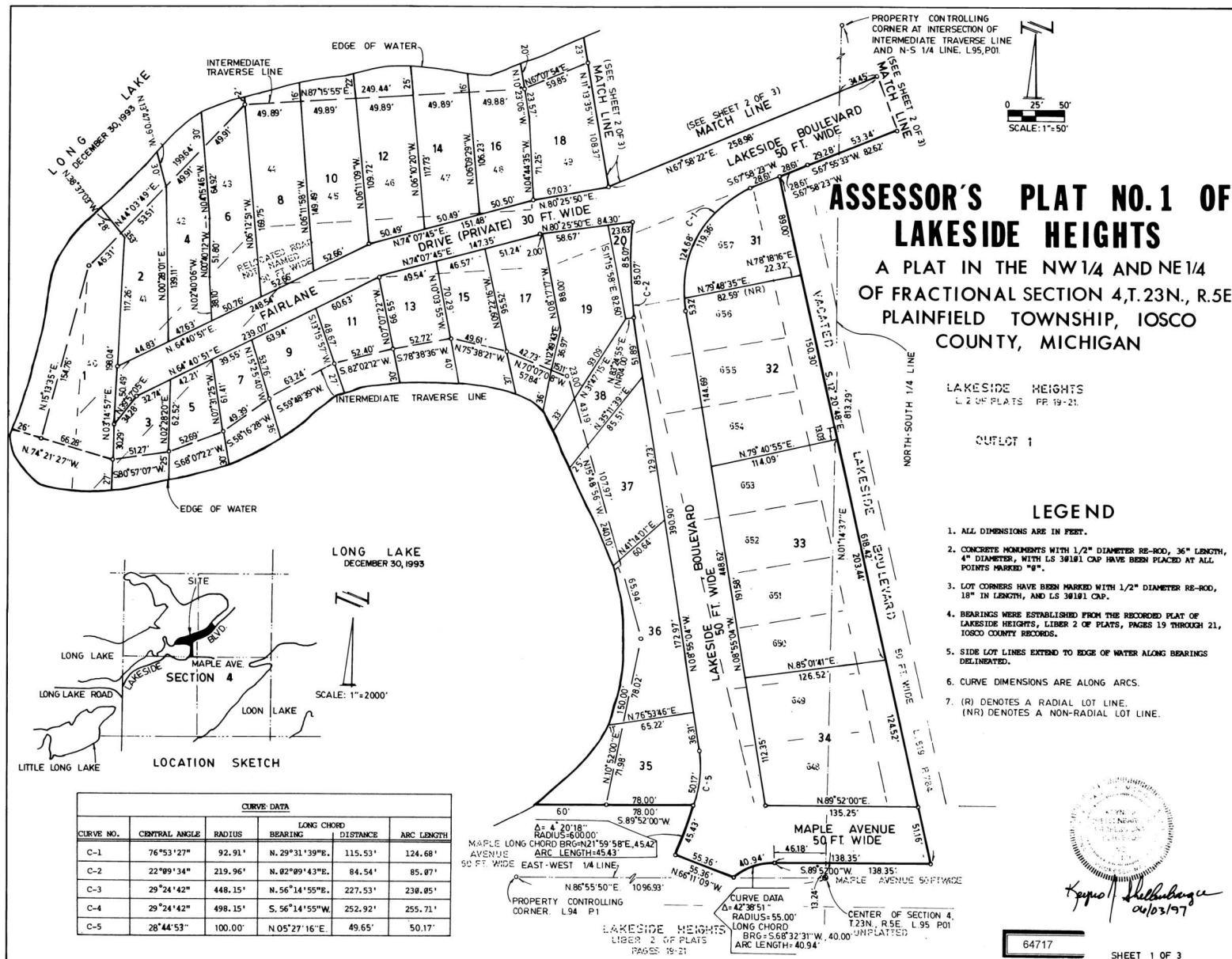
Kathy Freitag
KATHY FREITAG, CLERK

RECORDING CERTIFICATE)

STATE OF MICHIGAN)
COUNTY OF IOSCO)

THIS PLAT WAS RECEIVED FOR RECORD ON THIS 5th DAY OF February,
1998, AT 9:10 AM AND IS RECORDED IN LIBER 16 OF PLATS ON PAGE 3234

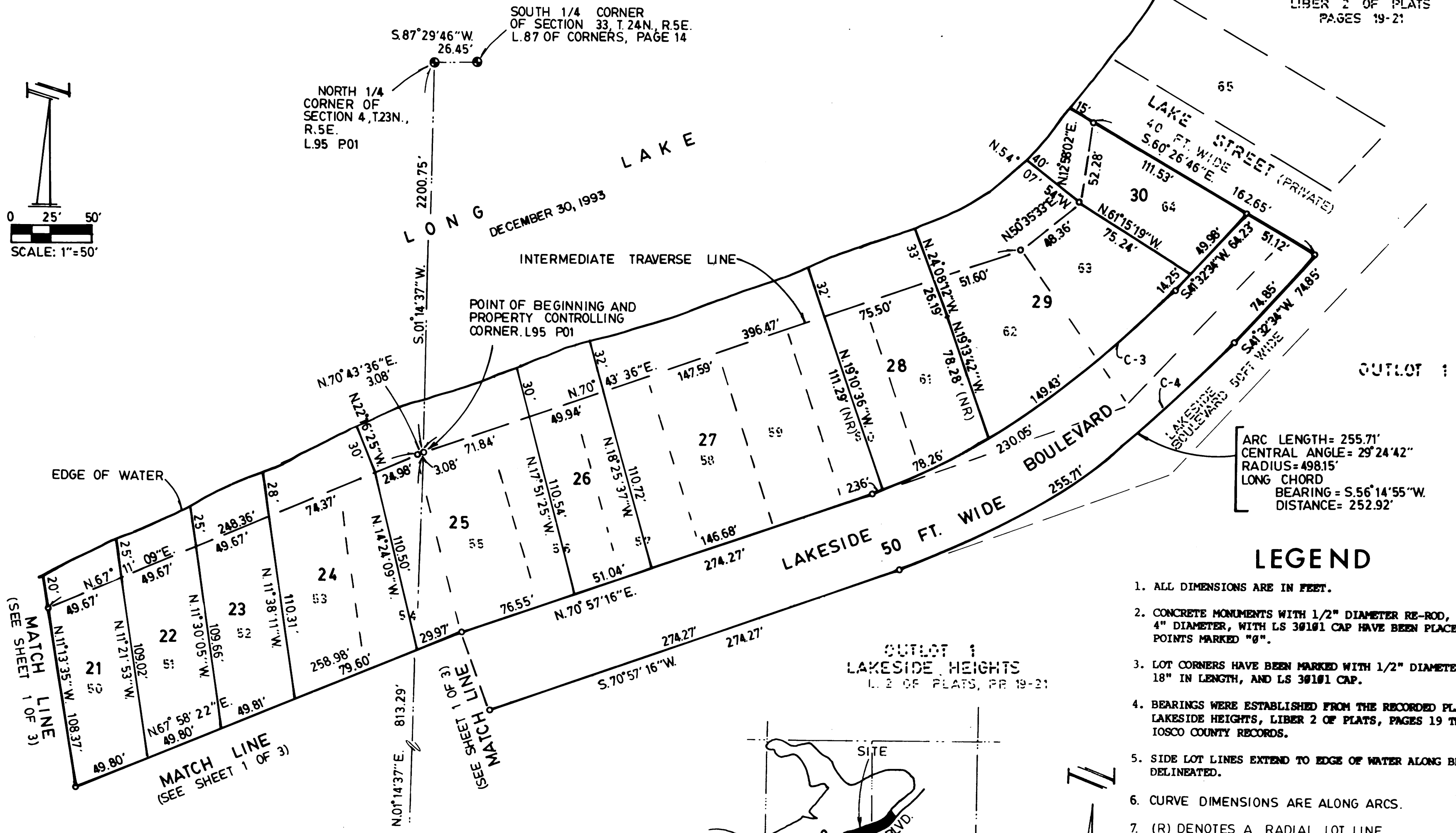
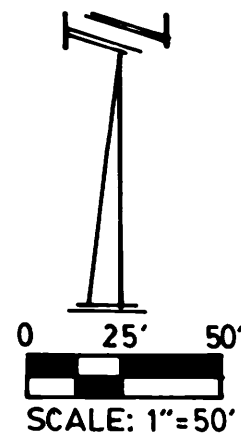
Bonita M. Coyle
BONITA M. COYLE, REGISTER OF DEEDS



ASSESSOR'S PLAT NO.1 OF LAKESIDE HEIGHTS

A PLAT IN THE NW1/4 AND NE1/4 OF FRACTIONAL SECTION 4, T.23N., R.5E.,
PLAINFIELD TOWNSHIP, IOSCO COUNTY, MICHIGAN

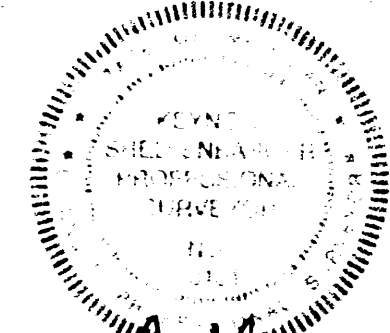
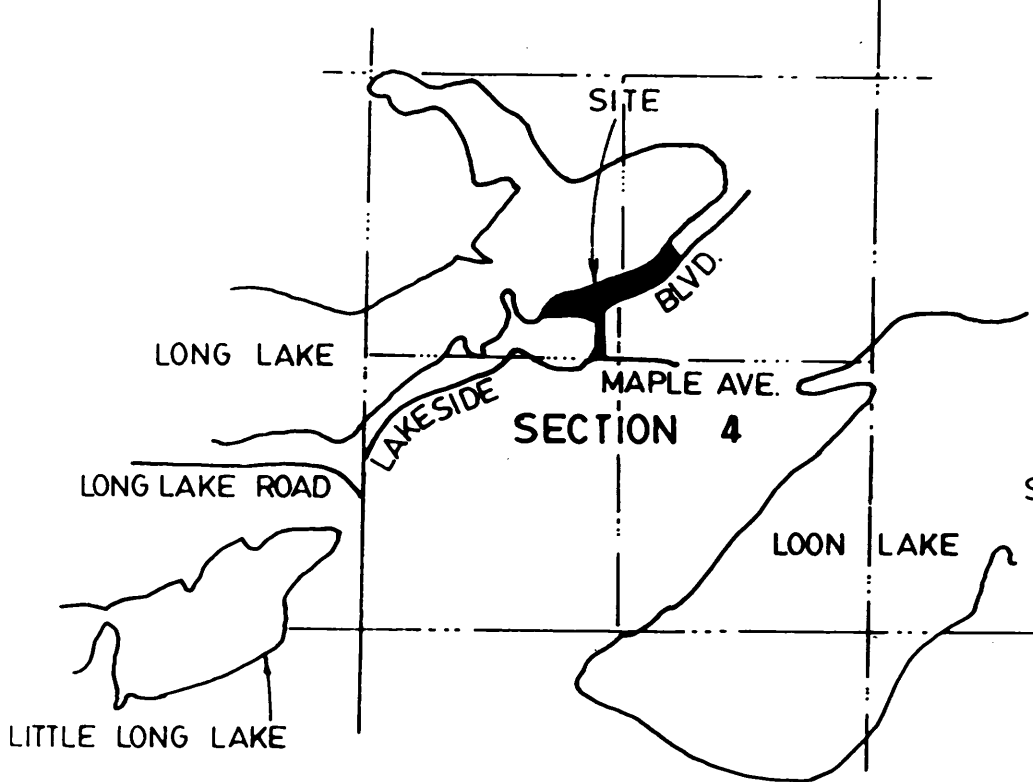
LAKESIDE HEIGHTS
LIBER 2 OF PLATS
PAGES 19-21



LEGEND

1. ALL DIMENSIONS ARE IN FEET.
2. CONCRETE MONUMENTS WITH 1/2" DIAMETER RE-ROD, 36" LENGTH, 4" DIAMETER, WITH LS 30101 CAP HAVE BEEN PLACED AT ALL POINTS MARKED "0".
3. LOT CORNERS HAVE BEEN MARKED WITH 1/2" DIAMETER RE-ROD, 18" IN LENGTH, AND LS 30101 CAP.
4. BEARINGS WERE ESTABLISHED FROM THE RECORDED PLAT OF LAKESIDE HEIGHTS, LIBER 2 OF PLATS, PAGES 19 THROUGH 21, IOSCO COUNTY RECORDS.
5. SIDE LOT LINES EXTEND TO EDGE OF WATER ALONG BEARINGS DELINEATED.
6. CURVE DIMENSIONS ARE ALONG ARCS.
7. (R) DENOTES A RADIAL LOT LINE.
(NR) DENOTES A NONRADIAL LOT LINE.

CURVE DATA					
CURVE NO.	CENTRAL ANGLE	RADIUS	LONG CHORD		ARC LENGTH
			BEARING	DISTANCE	
C-1	76°53'27"	92.91'	N. 29°31'39"E.	115.53'	124.68'
C-2	22°09'34"	219.96'	N. 02°09'43"E.	84.54'	85.07'
C-3	29°24'42"	448.15'	N. 56°14'55"E.	227.53'	230.05'
C-4	29°24'42"	498.15'	S. 56°14'55"W.	252.92'	255.71'
C-5	28°44'53"	100.00'	N. 05°27'16"E.	49.65'	50.17'



64717